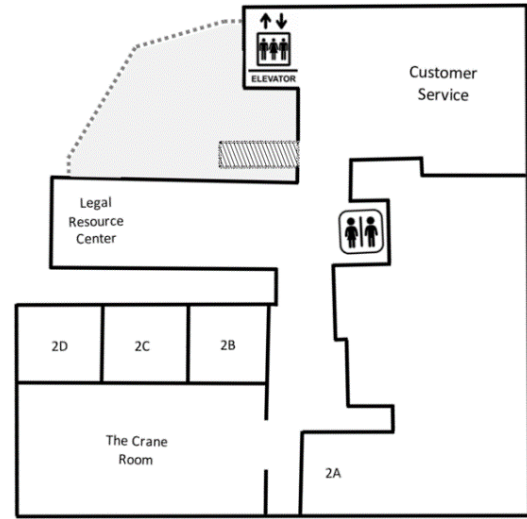
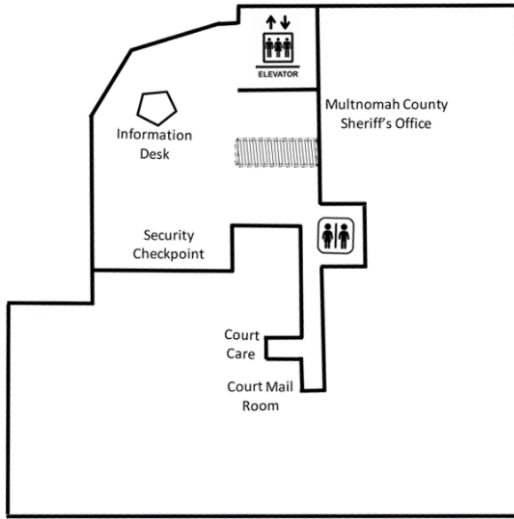


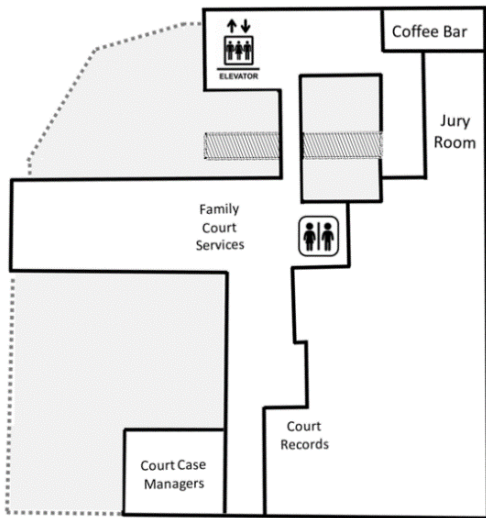
Building a Court for the 21st Century

Public Services & Operations Floors

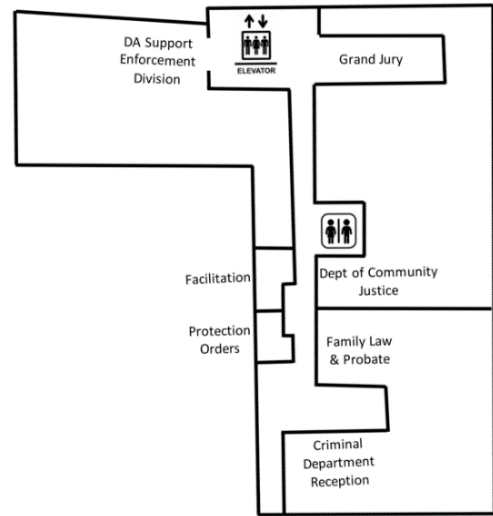


Floor	Destination Name	Room #
1	Child Care (aka CourtCare)	01500
	Court Mail Room	01107
	Information Desk	01004
	Multnomah County Sheriff	01200

Floor	Destination Name	Room #
2	Customer Service	02100
	Crane Room	02500
	Legal Resource Center	02307
	High Volume Courtrooms	2A, 2B, 2C, 2D



Floor	Destination Name	Room #
3	Jury Assembly Room	03203
	Coffee Bar	03005
	Court Records	03315
	Court Case Managers	03500
	Family Court Services (Mediation & Parent Education)	03400

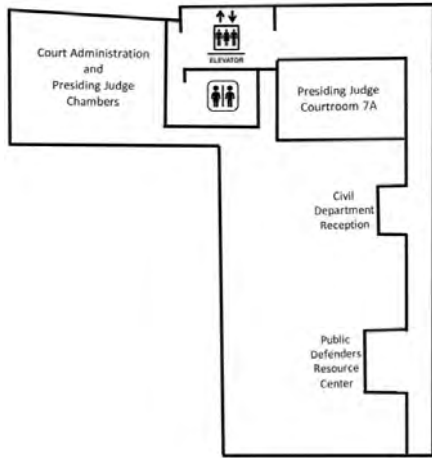


Floor	Destination Name	Room #
4	Criminal Department Reception	04500
	Department of Community Justice	04401
	MCDA Support Enforcement Division	04200
	Family Law and Probate Department	04500
	Grand Jury	04300
	Protection Orders	04516
Facilitation	04518	

Floor 5 & 6 (not shown): Multnomah County District Attorney's Office Reception on 5th floor

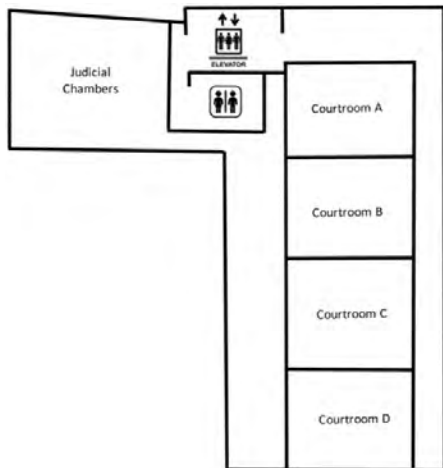
Building a Court for the 21st Century

Administration & Courtroom Floors

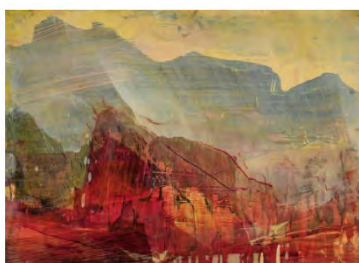


Floor	Courtroom	Judicial Department
8	08A	Judge Kathryn Villa-Smith
	08B	Judge Heidi Moawad
	08D	Civil Commitments
9	09A	Larger Trial Courtroom - Unassigned
	09B	Judge Francis G. Troy
	09C	Judge Melvin Oden-Orr
	09D	Judge Christopher J. Marshall
10	10A	Judge Leslie G. Bottomly
	10B	Judge Patricia L. McGuire
	10C	Judge Christopher A. Ramras
	10D	Judge Kelly Skye
11	11A	Larger Trial Courtroom - Unassigned
	11B	Judge Stephen Alexander
	11C	Judge Angela F. Lucero
	11D	Judge Thomas M. Ryan
12	12A	Judge David F. Rees
	12B	Senior Judge in Residence
	12C	Judge Xiomarra Y. Torres
	12D	Judge Jacqueline L. Alarcon
13	13A	Judge Cheryl Albrecht
	13B	Judge Jenna Plank
	13C	Judge Morgan Long
	13D	Judge Amy Baggio
14	14A	Judge Chanpone P. Sinlapasai
	14B	Judge Celia A. Howes
	14C	Judge Andrew M. Lavin
	14D	Judge Patrick Henry
15	15A	Judge Amy Holmes Hehn
	15B	Judge Eric L. Dahlin
	15C	Judge Shelley D. Russell
	15D	Judge Nan G. Waller
16	16A	Judge Benjamin N. Souede
	16B	Judge Rima I. Ghandour
	16C	Judge Katherine von ter Stegge
	16D	Judge Susan M. Svetkey
17	17A	Judge Michael A. Greenlick
	17B	Judge Adrian L. Brown
	17C	Judge Bryan B. Francesconi
	17D	Judge Michael S. Loy

Floor	Destination Name	Room #
7	Court Administration	07201
	Civil Department Reception	07510
	Presiding Judge Chambers	07200
	Presiding Courtroom	07A



Floors 8 through 17 are largely the same, with the exception of floor 8, which has no “C” courtroom. Judicial chambers for each judge are on the same floor as their assigned courtroom.



Central Courthouse artwork, by James Lavadour